



# WeatherDrive<sup>™</sup>



**DOOR TYPES:** residential rolling garage doors **DOOR SIZE:** up to 15m<sup>2</sup>

The ideal product for powering sheds and carport roller doors

## Key Benefits



Compliant to Australian and New Zealand Standard AS/NZS 60335-2-95



### Weather Resistant

Market leading IP34 rated housing to help protect from the elements.



### Slimline Design

Designed for tight spaces. The opener only requires minimum side room of 40 mm.



### LED Lighting

9 ultrabright LED's built into the opener.



### Security+2.0

Transmitters communicate on multiple frequencies with encrypted rolling code. This ensures the strongest frequency is selected every time, virtually eliminating interference while providing the highest level of security.



### Up to 75% less energy\*

Uses less than 1 watt of power whilst in standby mode. The best performance in the industry.



### E-Lock

Control Panel buttons can be locked, providing better security.



### Dual speed

Two travel speeds provides greater control and performance.



### Quiet and Powerful Motor

The powerful and fast DC motor is quiet and built to last with the strength to open any garage door or shed.



### Improved Transmitter Range

Tested against other products, these transmitters have up to 18% better range which means you can start opening your garage door sooner.



### 3 Year Warranty

Backed by a 3 year / 7,500 cycle warranty\*\* we stand behind our products with an after sales support team that we believe are the best in the industry.

### Standard Merlin Safety Features



### Premium Automatic Safety Reverse

With its automatic safety function your garage door will stop and reverse automatically if obstructed going down or stop going up.



### Automatic Force Sensing

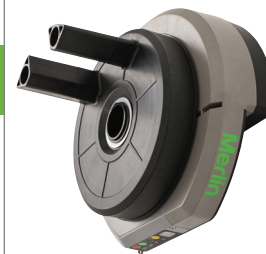
Equipped with automatic force sensing, with each operation the garage door opener monitors and adjusts the force needed to open your garage door.



### Manual Release

In case of power failure you can simply activate the manual release to open your garage door.

\*when compared to other available products \*\* conditions apply



## Kit Contents

1 x Powerhead



2 x Three channel key ring mini-transmitters E945M



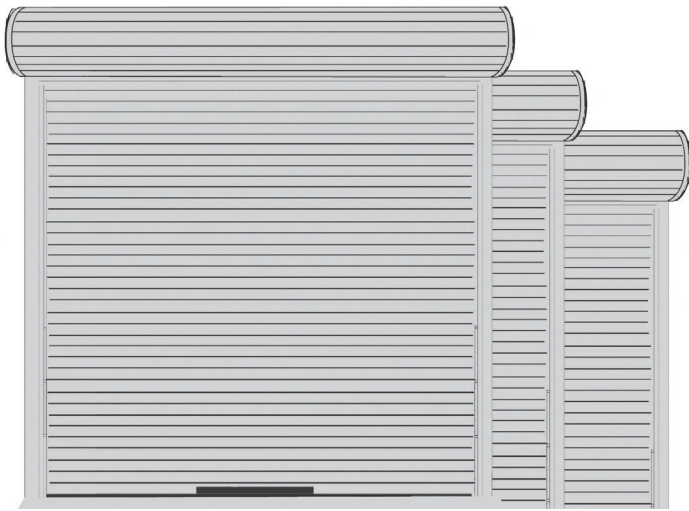
1 x Wireless wall button E138M



Weight bar

## SPECIFICATIONS

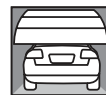
- IP34 housing
- 24V DC motor with thermal overload protection
- Input voltage: 240V AC
- Minimum side room 40mm
- Rated door area up to 15m<sup>2</sup>
- Max door weight: up to 100kg
- Drum rotations: 5.5
- Max peak pulling force: 500 N
- 433.30, 434.54, 433.92 MHz AM radio with Security+2.0 encrypted rolling code technology.
- Up to 64 memory registers
- Courtesy light: 9 standard ultrabright LEDs
- Noise rating 1M : 51DB
- Soft start/stop function



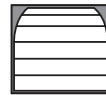
### DOOR SPECIFICATIONS

- Maximum lifting under spring tension = 15kg
- Suitable for steel spring balanced doors

### DOOR OPENING AND CLOSING TIMES



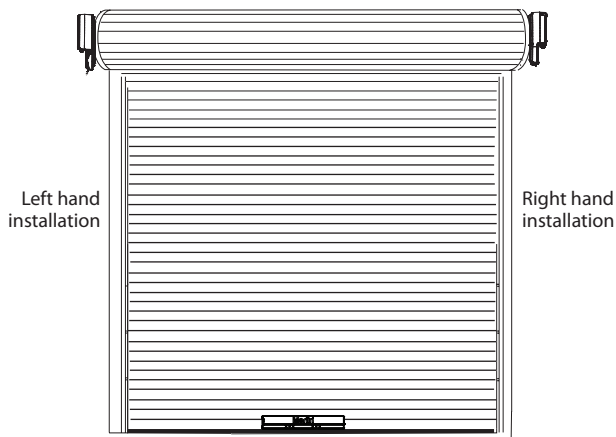
↑ 14 seconds (regular)  
18 seconds (slow)



↓ 14 seconds (regular)  
18 seconds (slow)  
(based on a 2.3m high door)

Door height: 5.5m, 3.0m, 2.3m Door width: 6.0m, 5.0m, 3.5m  
Single dwelling, max door weight: up to 100kg

### TYPICAL INSTALLATION



Minimum distance from edge of curtain to edge of door bracket 40mm



### OPTIONAL ACCESSORIES



Premium+ four channel transmitter  
E960M



Wall or visor mounted three channel transmitter  
E943M



Wall or visor mounted single channel transmitter  
E940M



Wireless keypad  
E840M



Protector system safety beam sensors  
774ANZ

## CHAMBERLAIN®

The World's Largest Manufacturer of Garage Door Openers

**Australia** Phone: 1800 638 234 Fax: 1800 888 121 Web: [gomerlin.com.au](http://gomerlin.com.au)  
**New Zealand** Phone: 0800 653 667 Fax: 0800 653 663 Web: [gomerlin.co.nz](http://gomerlin.co.nz)

™ Trademark of The Chamberlain Group, Inc. ® Registered Trademark of the Chamberlain Group, Inc.  
© 2015 The Chamberlain Group, Inc.

